



# Terrain Navigator Pro

## MAPPING PLATFORM

### INSTANT MAPPING & EASY DATA CAPTURE WITHOUT GIS EXPERTISE

Terrain Navigator® Pro (TNP) is a robust mapping platform combining built-in topographic maps and aerial photos with easy-to-use mapping tools. Create map projects, annotate, edit, collect, import and export GIS data and maps and synchronize across desktop, web, and mobile devices. Output professional map products quickly and easily.

Private land plat maps, including boundaries, assessor's parcel number (APN) and ownership information is available for over 90% of the US. View and query ownership information in the office and field, and see your location in real-time relative to private and public property boundaries.

Effortlessly collaborate with team members when you add two or more users to your account.

### THE TNP ANNUAL SUBSCRIPTION INCLUDES:

#### TNP Desktop

Desktop software comes bundled with high resolution scans of USGS topographic maps, current aerial photographs, satellite imagery, street maps, terrain maps, and more. Includes powerful tools to measure and add labels, marks, symbols, lines, routes, tracks, area fills, GIS data sets, and notes. Design professional maps using the built-in printing and publishing tools. Layers, maps, and photos can be exported to be used in GIS and CAD software or image editor.

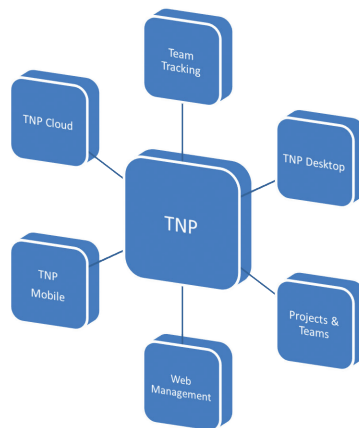
#### TNP Mobile

Use the TNP mobile app (iOS and Android) to collect GPS markers, tracks and geo-stamped photos and videos in the field and to sync all collected data across the mobile and desktop

platform. The TNP Mobile App works in and out of cellular coverage, allowing accessing to pre-cached TNP maps and to TNP projects even when in remote locations.

#### TNP Web

TNP Web will satisfy basic project access and mapping needs, and includes simple tools for editing project content. The TNP web is accessible from any computer or tablet with Internet access without requiring the need for software download.



#### TNP Cloud

Bi-directional synchronization (Desktop, Web, Mobile) of mapping projects in real-time utilizing cellular networks or Wi-Fi. Access existing projects in the field, or create new projects anywhere.

#### Team Tracking

TNP users within the same organization have the added benefit of team collaboration, sharing, and multi-user project development. Track teammate positions in real time for simultaneous display on desktop and mobile devices. Annotate maps for individual or team use from anywhere whether in the field, in the office or on-the-go from any TNP device. Control the administrative privileges by customizing the number of users as the needs of your organization evolve.

## Key Features

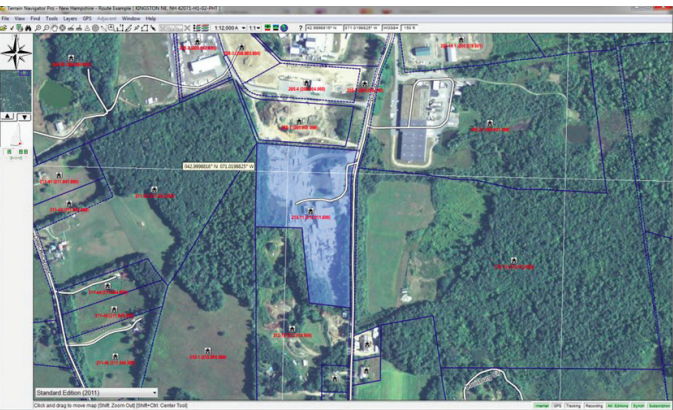
- ▶ Convenient Access to Base Maps (Topos/Aerials/Street)
- ▶ Easy-to-use Mapping Tools for Measuring/Annotation Cross-platform Syncing (Desktop, Web, Mobile)
- ▶ Ability to Save Map Projects
- ▶ Cache Maps for Offline Use
- ▶ Team Collaboration/Tracking Professional Digital/Print Output

## Who Benefits

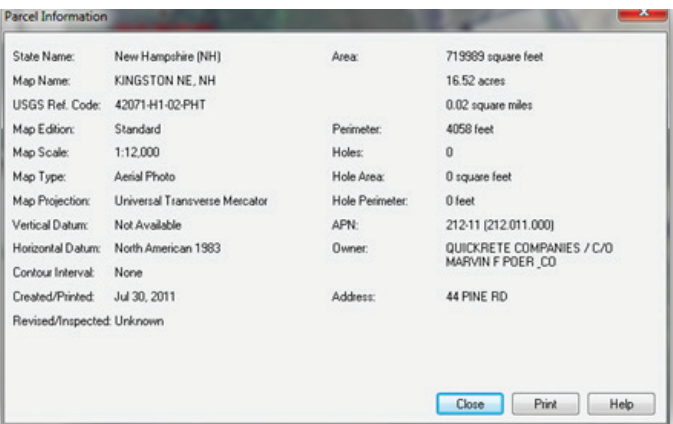
- ▶ Foresters
- ▶ Surveyors
- ▶ Land Managers
- ▶ Appraisers
- ▶ Civil, Environmental and Construction Engineers



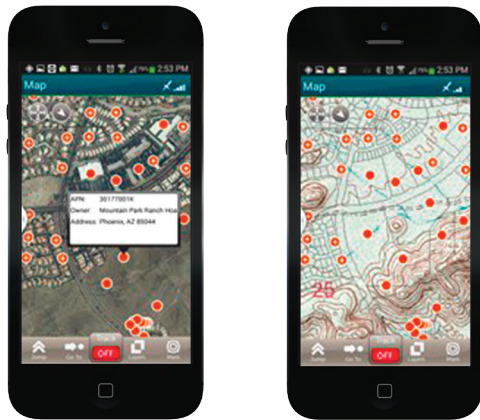
# Terrain Navigator Pro MAPPING PLATFORM



Premium parcel data on the TNP Desktop



Parcel data includes land owner information and assessor's record number



View parcel boundaries and query owner information on mobile device

## PREMIUM PARCEL SUBSCRIPTION

Private parcel data is available in the TNP Desktop software, the mobile app, and the web platform. The premium parcel subscription includes ownership details including:

- ▶ Private land boundary polygons
- ▶ Landowner name and address
- ▶ Assessor's parcel number (APN)

## TESTIMONIAL

"I use TNP to map, collect data, and manage a 600 acre tree farm. I map trails, gates, culverts, boundaries, and other points of interest, and am able to import GIS data created by my forester ...delineating timber stands and other features. I find TNP is easy to use, much more cost effective than other products for a personal user like myself, and it works well to collect data from various sources. I've been using the program almost 12 years now and love all the improvements that have been made over that time."

– Skip F.

## CONTACT INFORMATION:

Phone 800-627-7236 x204  
 Email: [TNPsales@trimble.com](mailto:TNPsales@trimble.com)  
 Product Information: [www.terrainnavigator.com](http://www.terrainnavigator.com)  
[www.trimble.com/forestry](http://www.trimble.com/forestry)

TNP is a product of Trimble Forestry. Trimble's Forestry Division offers land, forest and fibre management solutions that improve the productivity and operations for some of the world's most recognized integrated forest product companies, forest landowners, timberland investment, conservation, state and federal departments as well as international food processing companies involved in environmental, social and economic land management. The Connected Forest solutions manage the full raw materials life cycle of planning, planting, growing, harvesting and transport.

Contact your local dealer today

**CANADA**  
 Suite 560,  
 1188 West Georgia Street  
 Vancouver BC, V6E 4A2  
 Canada  
 +1 604 697 6400 phone

**USA**  
 4100 SW Research Way  
 Corvallis, OR 97333  
 USA  
 +1 541 750 9200 phone

**FINLAND**  
 Niittykatu 8 A  
 02200 Espoo  
 Finland  
 +358 20 742 0600 phone

**NEW ZEALAND**  
 1372 Hinemoa Street  
 Rotorua, 3010  
 New Zealand  
 +64 7 348 0308 phone

[forestrysales@trimble.com](mailto:forestrysales@trimble.com)